

A graphic consisting of two overlapping chevron-like shapes. The top shape is a dark brown line forming a right angle, pointing towards the top right. The bottom shape is a white line forming a right angle, pointing towards the bottom right. They are positioned above the main title.

# STONERIDGE CONNECT

2018 Client Conference



The New Look of Development in  
Dynamics 365



# About the Speaker

---

**David Boll**

Development Team Manager

---

Email: [davidb@stoneridgesoftware.com](mailto:davidb@stoneridgesoftware.com)

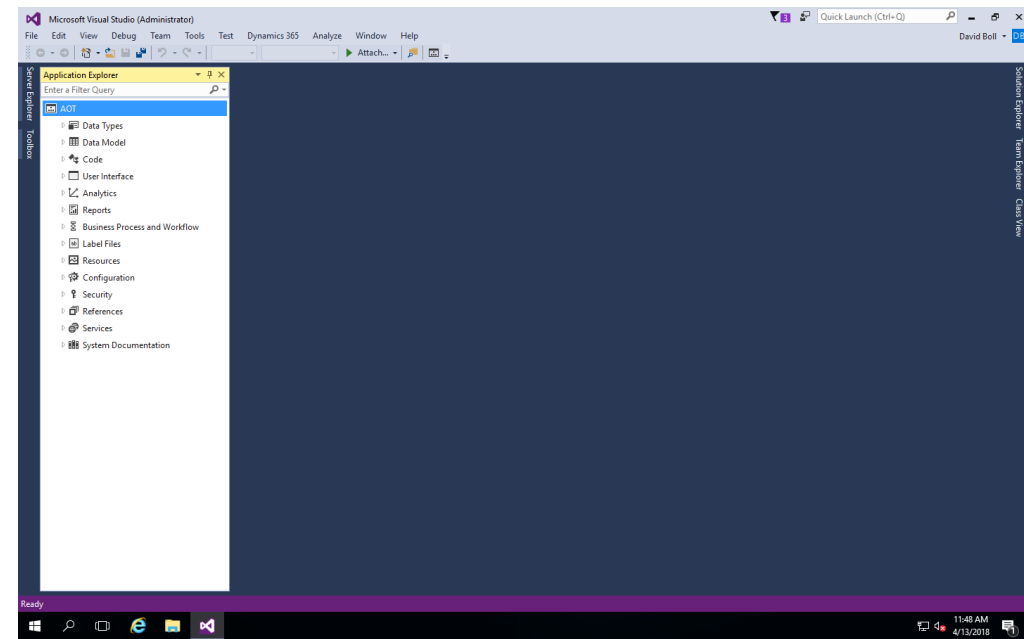
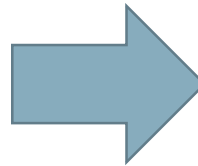
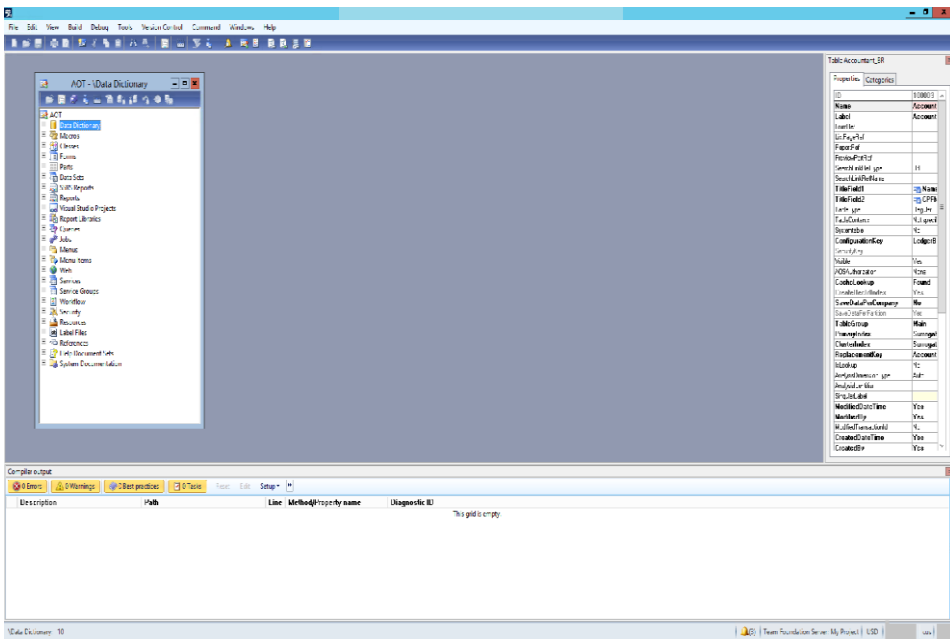
More about David:  
<https://stoneridgesoftware.com/team/david-boll/>

# Topics

- Visual Studio
- Form patterns
- What's new in X++
- Extensions Development Model
- Chain of Command (if time allows)

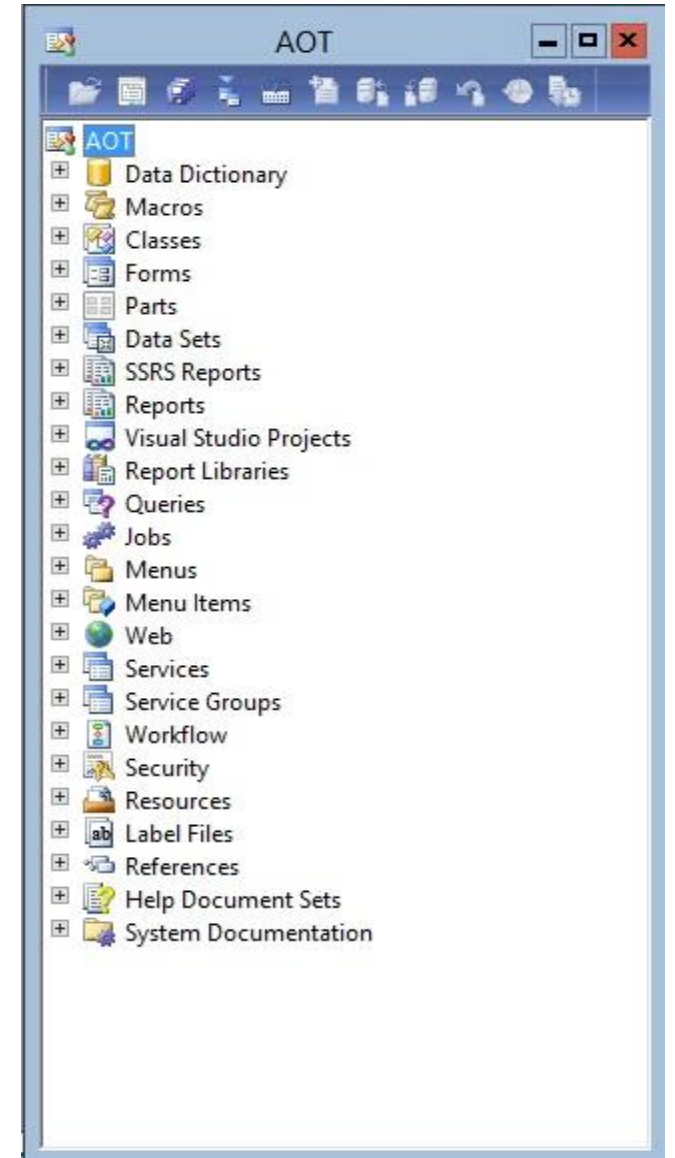
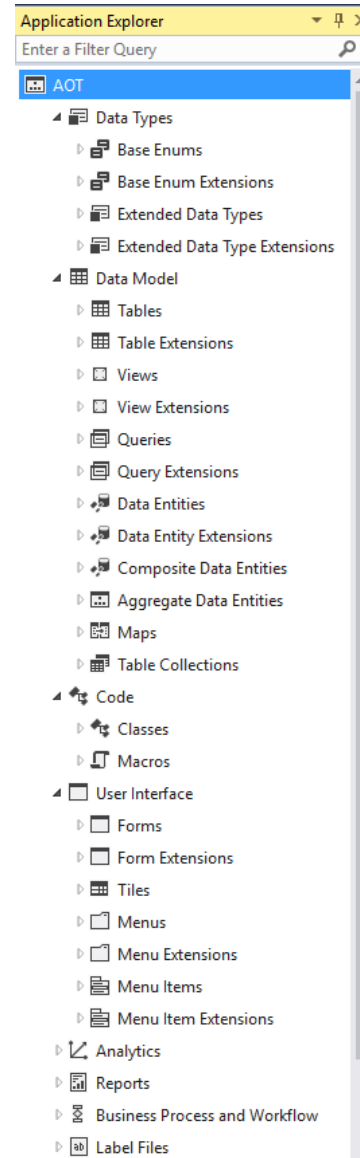
# New IDE

- MorphX is gone Visual Studio is here!!!



# New AOT Layout

- Data Types
  - Base Enums
  - EDTs
- Data Model
  - Tables
  - Views
  - Queries
  - Data Entities \*New
  - Composite Data Entities \*New
  - Aggregate Data Entities \*New
  - Maps
  - Table Collections \*New
- Code
  - Classes
  - Macros
- User Interface
  - Forms
  - Tiles \*New
  - Menus
  - Menu Items



# Form Patterns

- What are form patterns?
- Why are form patterns important?
- How do you set form patterns?
  - Lets jump to a demo!!!

# What is new in X++

- True variable scoping
- Var Data Type
- Enum changes
  - Use Enum Value – Specifies if the system specifies the background value
  - IsExtensible – Specifies if you can extend or needs to be customized
- CrossCompany query changes
  - New
    - `select crossCompany : ([‘cee’, ‘ceu’]) custTable`
  - Old
    - `Container conCompanies = [‘cee’, ‘ceu’];`
    - `Select crossCompany : conCompanies custTable`
- Try, Catch, Finally

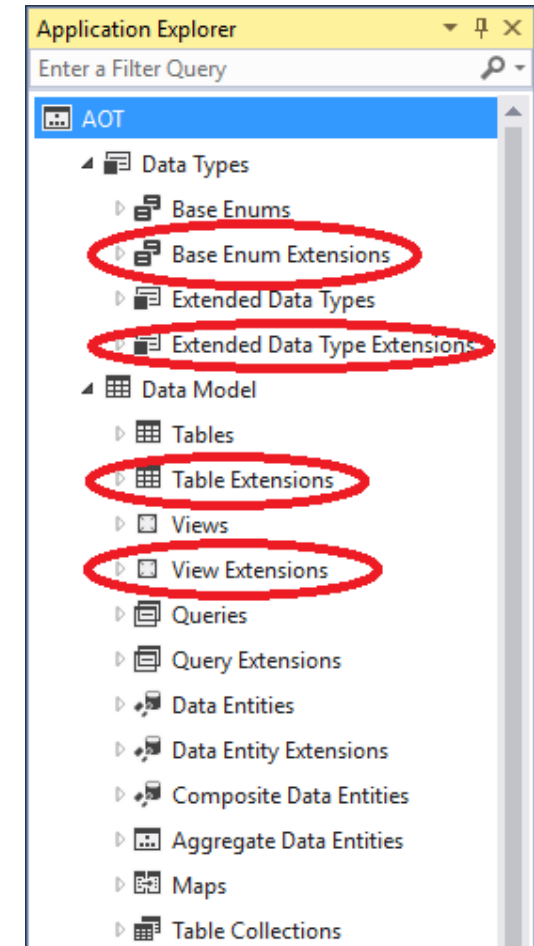
# Extension Development Model

- An extension to an object creates something new on that object
  - New field on a table
  - New method on a class
- Extensible objects
  - Tables
  - Classes
  - Forms
  - Enums
  - Menus
  - Security roles and duties



# Extension Development Model

- <ExistingObjectName>.Extension
  - The .Extension can be renamed
  - Separate folders for extensions
- Eventing
  - React (subscribe) to methods being called
  - Code for subscribed events resides in its own class
- Demo on Extension Development Model



# Chain of Command

- Class Extension
  - Create a new class
  - [ExtensionOf(classStr())]
  - Next keyword

## Example:

Class student

```
{  
    real studentAge (int _arg)  
    {  
        ...  
    }  
}
```

[ExtensionOf(classStr(Student))]

Class Student\_Extension

```
{  
    real studentAge (int _arg)  
    {  
        var s = next studentAge (_arg + 4);  
        return s;  
    }  
}
```

# Additional Reading

- <https://stoneridgesoftware.com/applying-form-patterns-in-dynamics-365-for-operations/>
- <https://blogs.msdn.microsoft.com/mfp/2017/07/04/extensible-x-chain-of-command/>
- <https://docs.microsoft.com/en-us/dynamics365/unified-operations/dev-itpro/extensibility/customize-model-elements-extensions>
- <https://stoneridgesoftware.com/download-a-onebox-vm-for-dynamics-365-for-finance-and-operations/>
- <https://stoneridgesoftware.com/dynamics-training/ax7-development-workshop-registration/> (D365 DEV training)

A stylized logo graphic consisting of a dark grey line forming a right-angled triangle pointing upwards and to the right, with a white line extending from the right angle towards the right edge of the frame.

# STONERIDGE CONNECT

2018 Client Conference



Questions?

# What's Next?

## More Information?

Talk to us! Or contact your account manager or project manager

## Need Support?

[axsupport@stoneridgesoftware.com](mailto:axsupport@stoneridgesoftware.com)

## Stay Connected

Sign up for our blog [stoneridgesoftware.com/blog](https://stoneridgesoftware.com/blog)